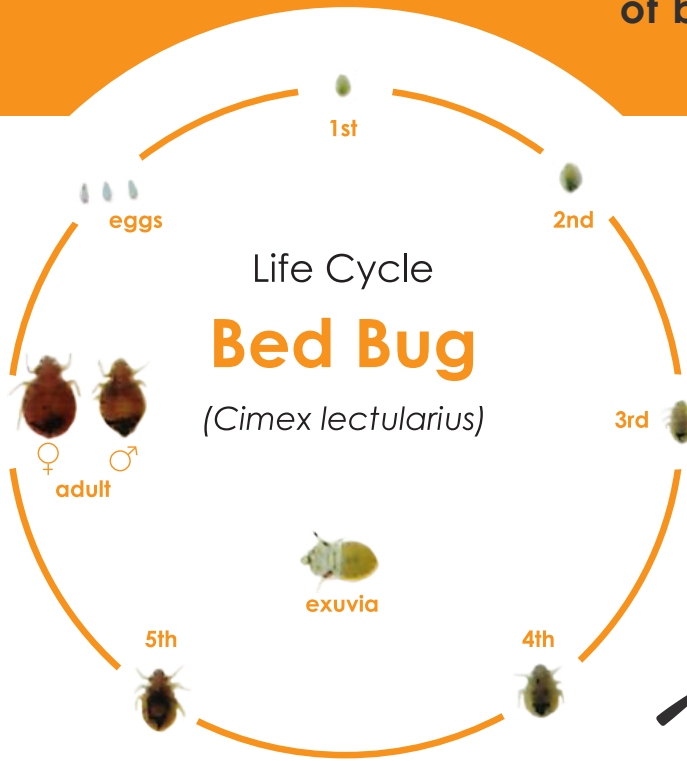


# Bed Bug Detection Guide

Bed Bug Preventative Maintenance will find early signs of bed bugs and will help to avoid infestations.



There are **5 immature stages** before reaching the adult reproduction stage.



**Bed Bug Signs** include blood marks, eggs, dark fecal spots, skin casings and clusters of bed bugs.

**The immature bed bug** is whitish in colour with a pearly sheen and darkens as it reaches maturity.

**Adult bed bugs** are reddish brown in colour and are approximately 6mm in length.



**Where to LOOK?**  
\*  
Protect your hands with medical gloves at all times during inspection. Bed Bugs can carry bacteria and viruses from feedings.

## ROOM INSPECTION SEQUENCE

### 1 BED INSPECTION

Pillows and pillow cases, seams, folds, tags, comforters, blankets/duvets, sheet layers, mattresses, box springs, headboards and walls behind headboards.

### 2 FURNITURE & ACCESSORIES

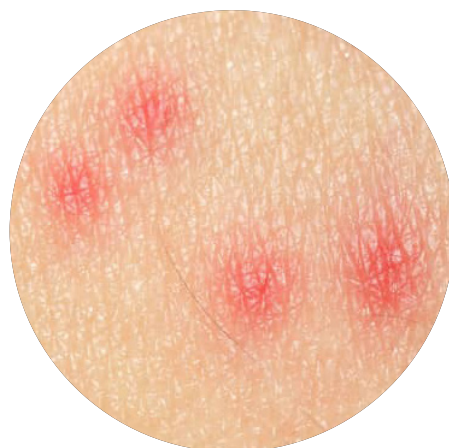
Night stands, dressers and all drawers, lamps, shelving, drapes, carpet edges, artwork/paintings, radio clocks, luggage racks, TVs, electronic devices.

### 3 WALL FIXTURES

Electrical outlets, TV plugs/charger outlets, cable plugs, lights, heating and ventilation, heating/cooling wall mounts.

## Bites

Bed bug bites often appear in clusters, presenting as a line or zig-zag. The raised red welts can take a few days to develop.



Don't let the **bed bugs** bite.

Contact your Pest Management Professionals

**+1 705 698 6022**

bedbugs@enviro-eco.ca

**enviro-eco.ca**